

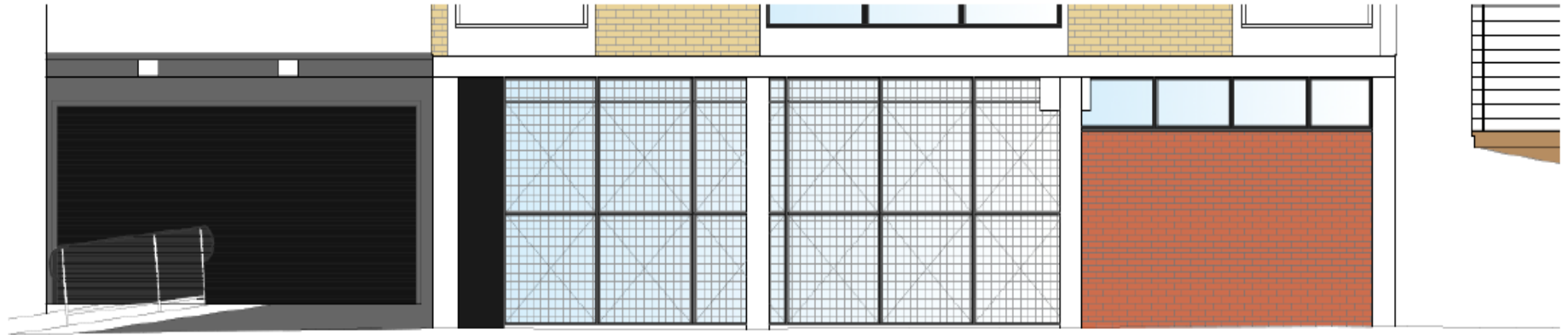
# The Library proposals



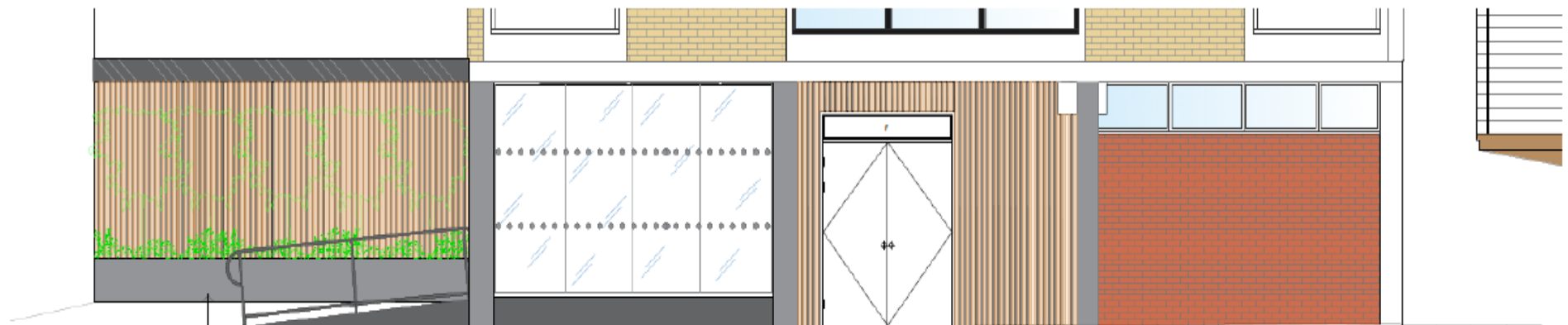
# LIBRARY IDEAS



# LIBRARY IDEAS



**EXISTING NORTH/WEST ELEVATION**



Existing entrance to be blocked off and new wall to be clad in exterior grade Acoupanels - oak effect to co-ordinate with the finishes to the Youth Center design. A new planter to be installed with evergreen vegetation.

New ramp to be installed to allow access into the new reception space (NOTE: Flooring in existing YC lobby is lower than the library existing flooring, so the interior floor level will need to be brought up to match the existing library floor.

New Glazed elevation to the reception to allow more natural light to enter the space. This will make the entrance feel more inviting to visitors. For security aspects, a roller shutter could be proposed to protect the glazing during closed hours.

New Fire exit to the Youth Center staircase. Wall elevation to be clad in exterior grade Acoupanel in oak finish to match the front of the library. Doors to be in a black finish.

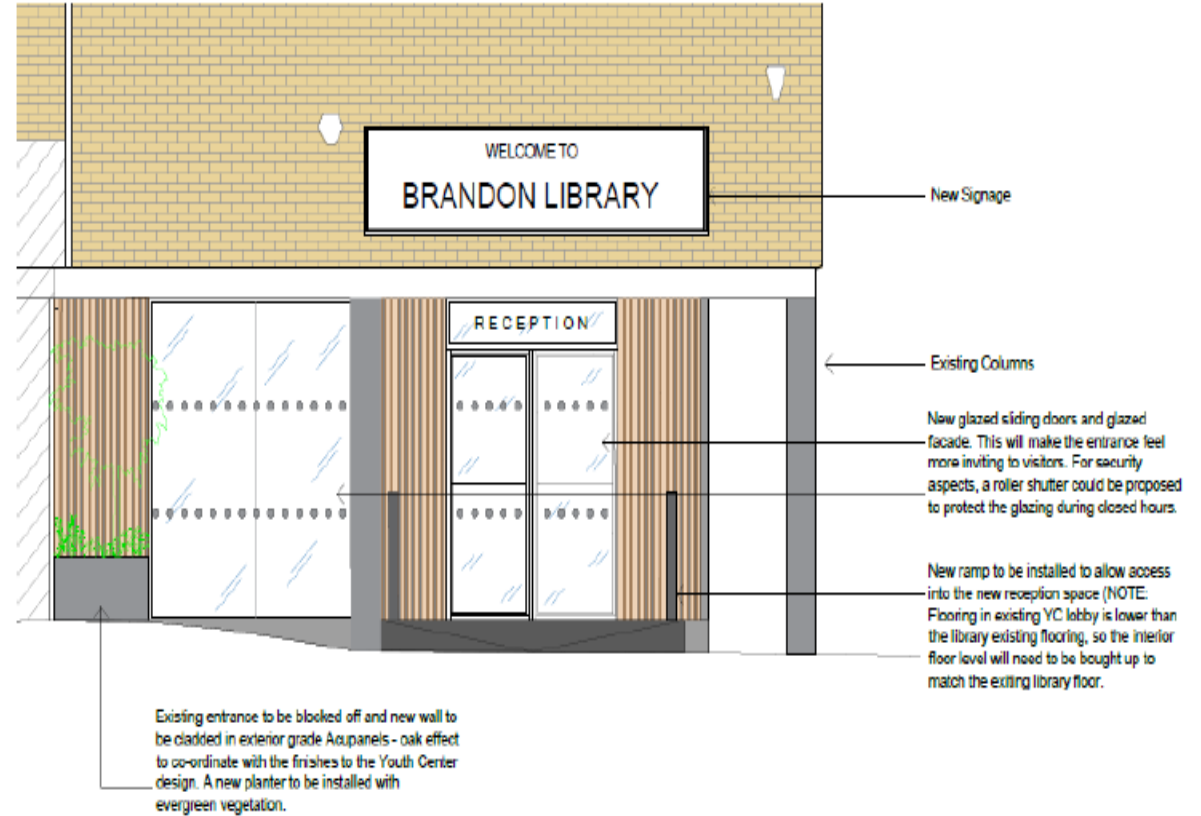
**PROPOSED NORTH/WEST ELEVATION**

# ELEVATION 1

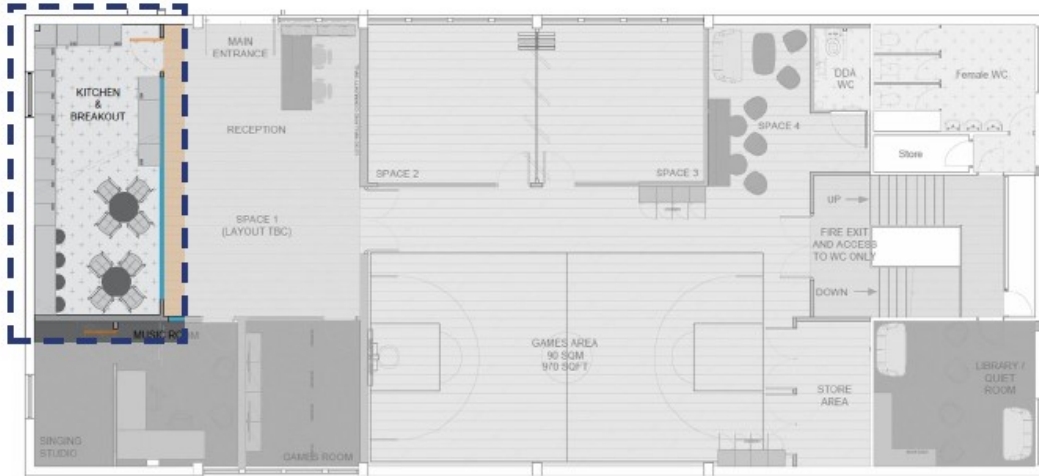
## EXISTING NORTH/EAST ELEVATION



## PROPOSED NORTH/EAST ELEVATION



# **The Youth Centre proposals**



## KITCHEN AND BREAKOUT:

The idea behind the kitchen and breakout is to create a bigger kitchen space for cooking classes and general catering for the space. Including a breakout allows a space to enjoy a snack or food in a space away from the main activities. There will be a half height window looking into the space which allows an audience to watch any classes and to create a safety aspect in terms of use.



# KITCHEN & BREAKOUT



## SPACES:

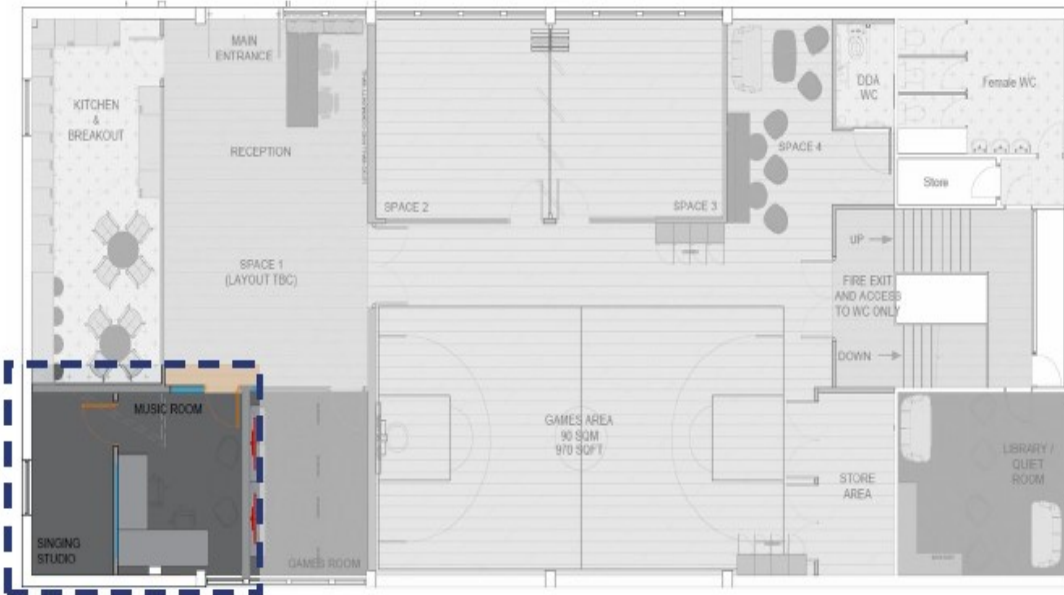
Creating zones/spaces allows for activities to be carried out without interruption from the louder activities that are also happening in the space. The rooms will be multi-use and can be opened into one big room with the use of a folding wall, meaning that they can be adapted to suit various activities from; pottery, painting, arts and crafts, homework etc. games area.

The seating space (space 1 in the example) will be a lounge type space designed for relaxing and for group to chat without being interfered by the louder games area.



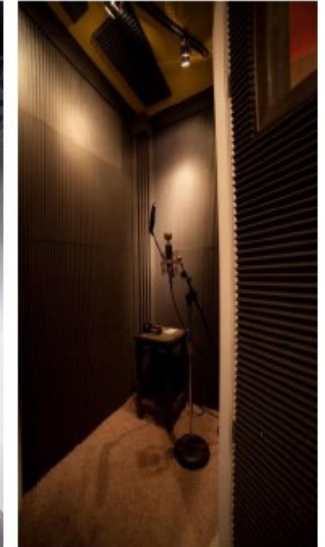
# SPACES





## MUSIC / SINGING STUDIO:

The studio will be a space where the community can use the room to create music and record tracks. The room will be soundproof allowing the external noise to not interrupt the sessions within the room. Neon lights and soft seating will create a cool space to collaborate and allow you to feel that you are in a real recording studio. The signing studio will be adjacent allowing you to create songs and collaborate.

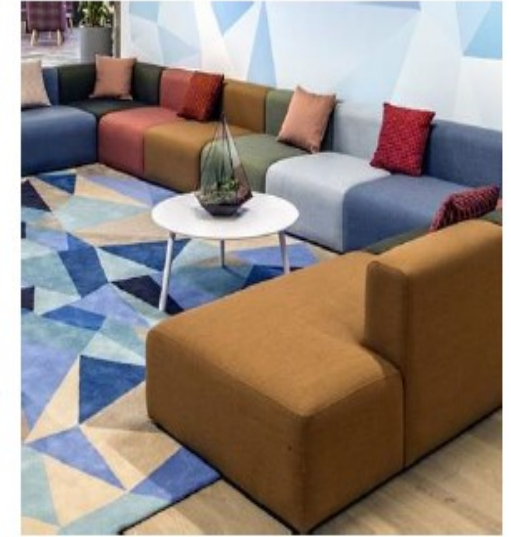


# MUSIC ROOM



## QUIET ROOM:

A safe space for people to hangout, read a book, catch up on homework or just a place to chat with friends. This space will be more of a lounge area with comfortable seating. The bookshelf could have a book swap where you could put a book which you've enjoyed and swap for another which has been left by someone else. This space could also be used by the youth workers as a zone for confidential conversations and group discussions.

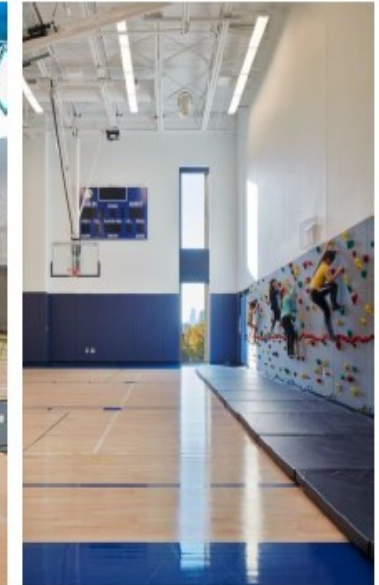


# QUIET ROOM



## COURT AREA:

The Court area is situated central in all options- a space to play ball games, table tennis/ping pong and an open space for social gatherings. Seating areas can be situated around the perimeter so that groups can watch and partake in games. The space will be multifunctional depending on what activity is on at the time.



# COURT AREA

## NEW STAIRCASE:

The design is to include the idea of a new entrance into the youth centre. By replacing the external staircase with a new internal staircase with an integrated platform lift that will bring you straight to the new main entrance. (currently the fire exit)  
The existing entrance will then become a fire exit only.

The idea is for the staircase and lift to be enclosed in a new extension of the space. This will make the entrance more secure. It will also allow for secure bike storage below the staircase and a safer way to enter the space. By doing this, the centre can keep a record on who is in the centre and opens the centre to those who are less able to access the space.

The existing externals could be cladded with wood slats and the window frames sprayed black to give the external façade a more contemporary feel and match the finishes for the new extension.



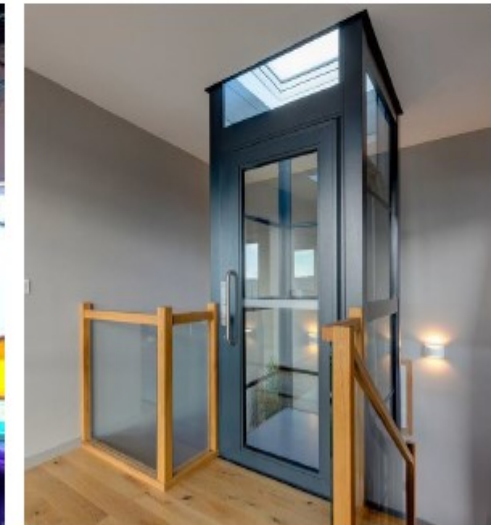
ELEVATION A



ELEVATION B



FILM ON THE WINDOWS



NEW LIFT WITH STAIRCASE.

# STAIRCASE