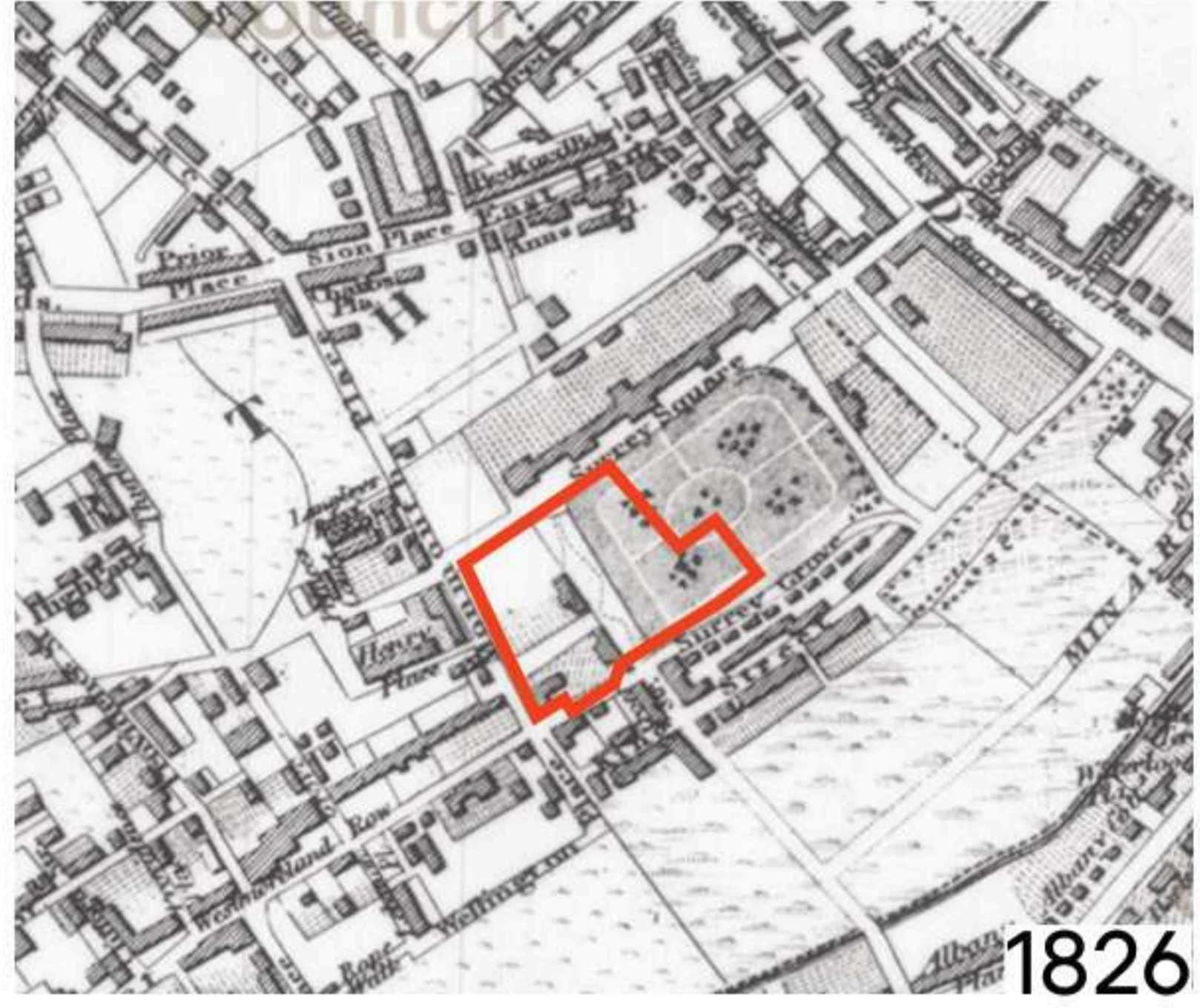


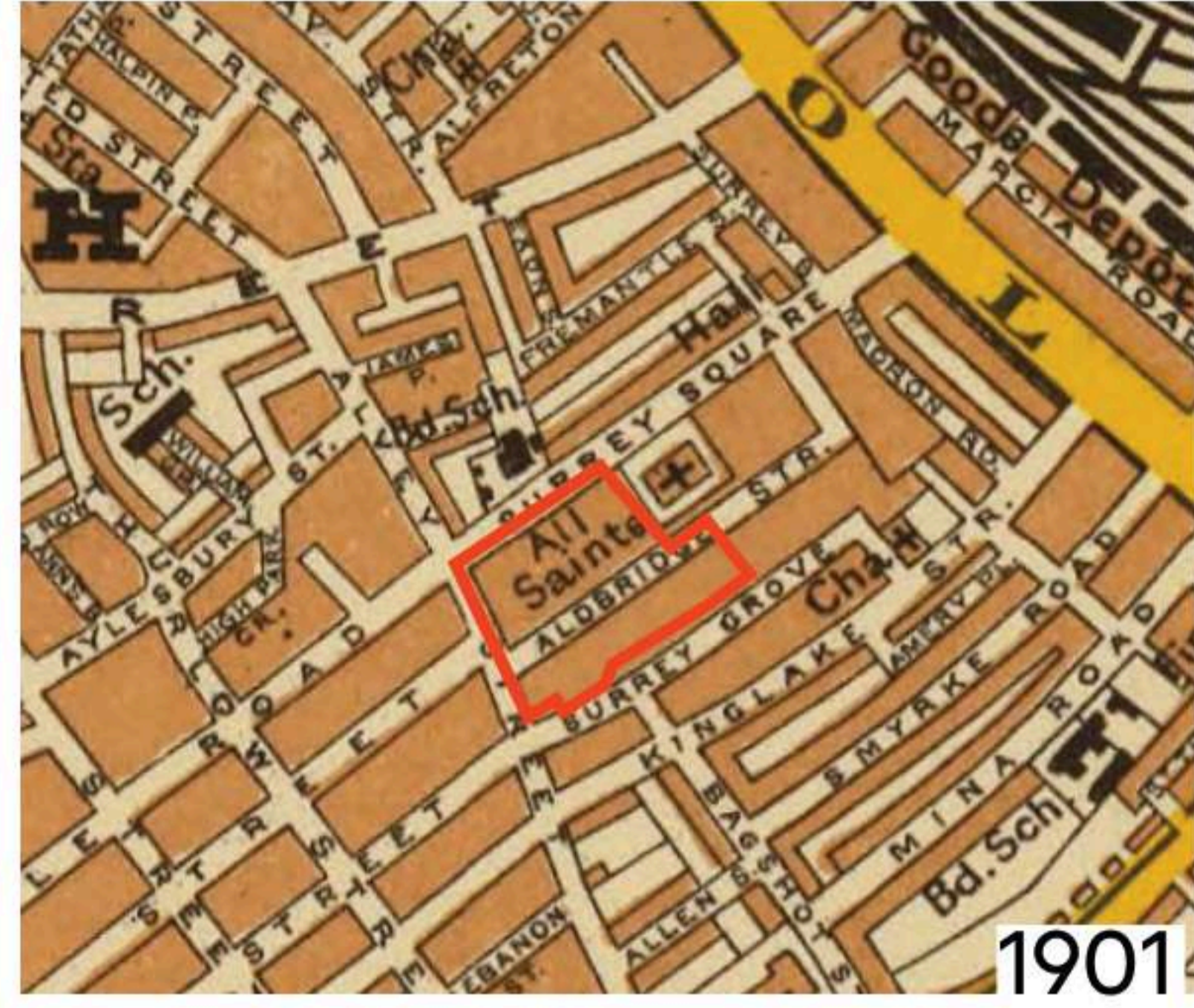
# Surrey Square Park Play

public consultation: 12/11/25

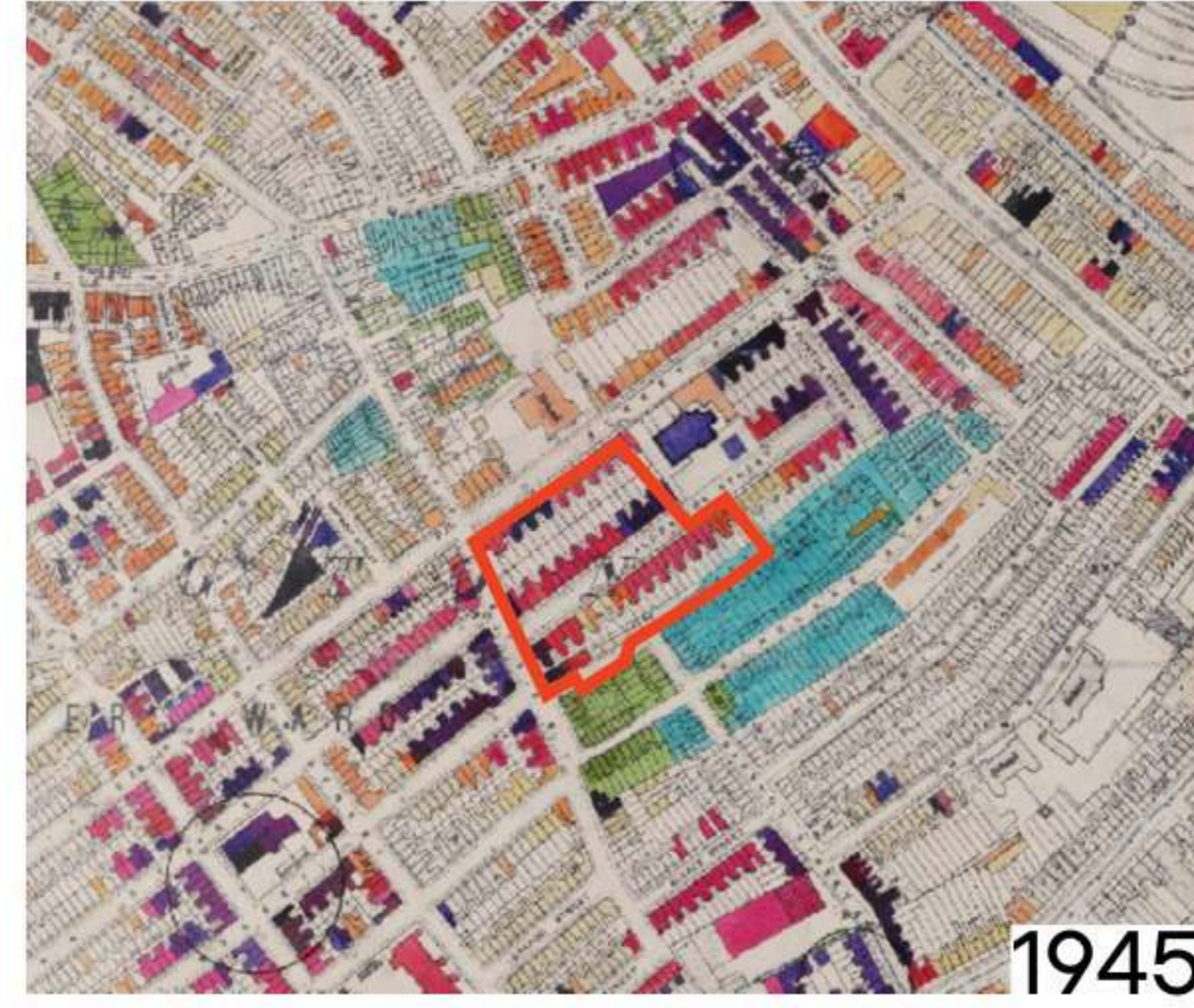
## Site History



1826



1901



1945



TODAY



FUTURE

Surrey Square was once in Surrey...

Then built over completely...

Then bombed heavily during World War 2...

Then was reinstated as public green space...

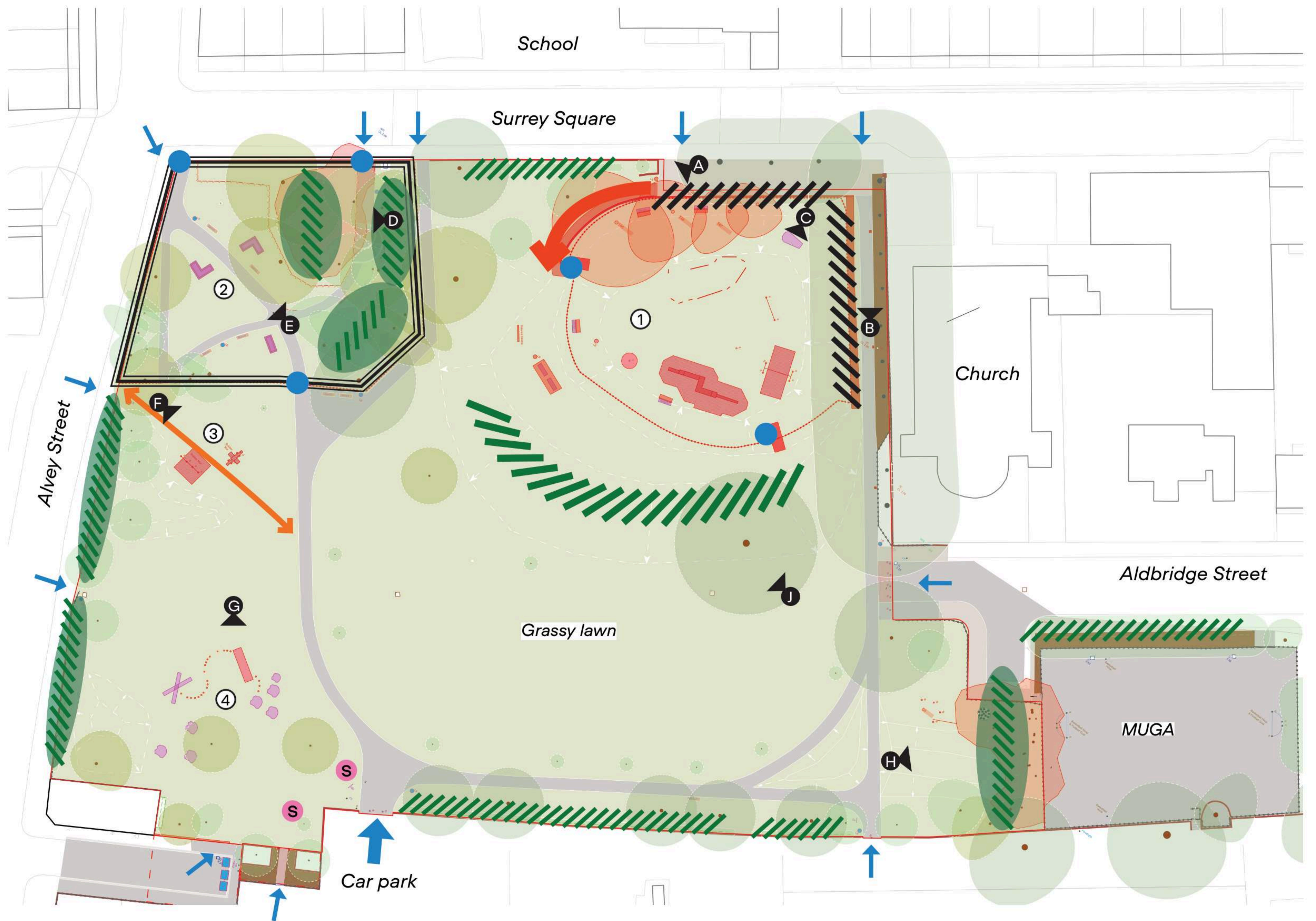
And into the future will continue as an important park

## Existing Site Plan

- ① **Playground**  
Inaccessible, unusable during wet weather as limited safety surfacing and within a bowl which collects water. Feels unsafe as its hidden within the mounds and offers a limited play provision.
- ② **Memorial Garden**  
Fully enclosed with gates acts as a barrier; overgrown with lots of self seeded trees; dark places make it feel unsafe
- ③ **Fitness area**  
Limited fitness equipment offering but well used. Desire line cuts through this area to exit/ enter the park
- ④ **Natural play area**  
Provides space for infant play, social space, informal exercise.

**Existing Legend**

- Primary entrance
- Secondary entrance
- Gate
- Desire line
- Inaccessible route
- Barrier - planted
- Barrier - wall
- Barrier - fence
- Park signage



## Existing Site Photos



**A** Brick boundary, inaccessible route



**B** Timber sleepers retaining wall



**C** Grassy playground



**D** Overgrown, dense memorial garden



**E** Memorial garden with planters and benches



**F** Fitness area



**G** Natural play features

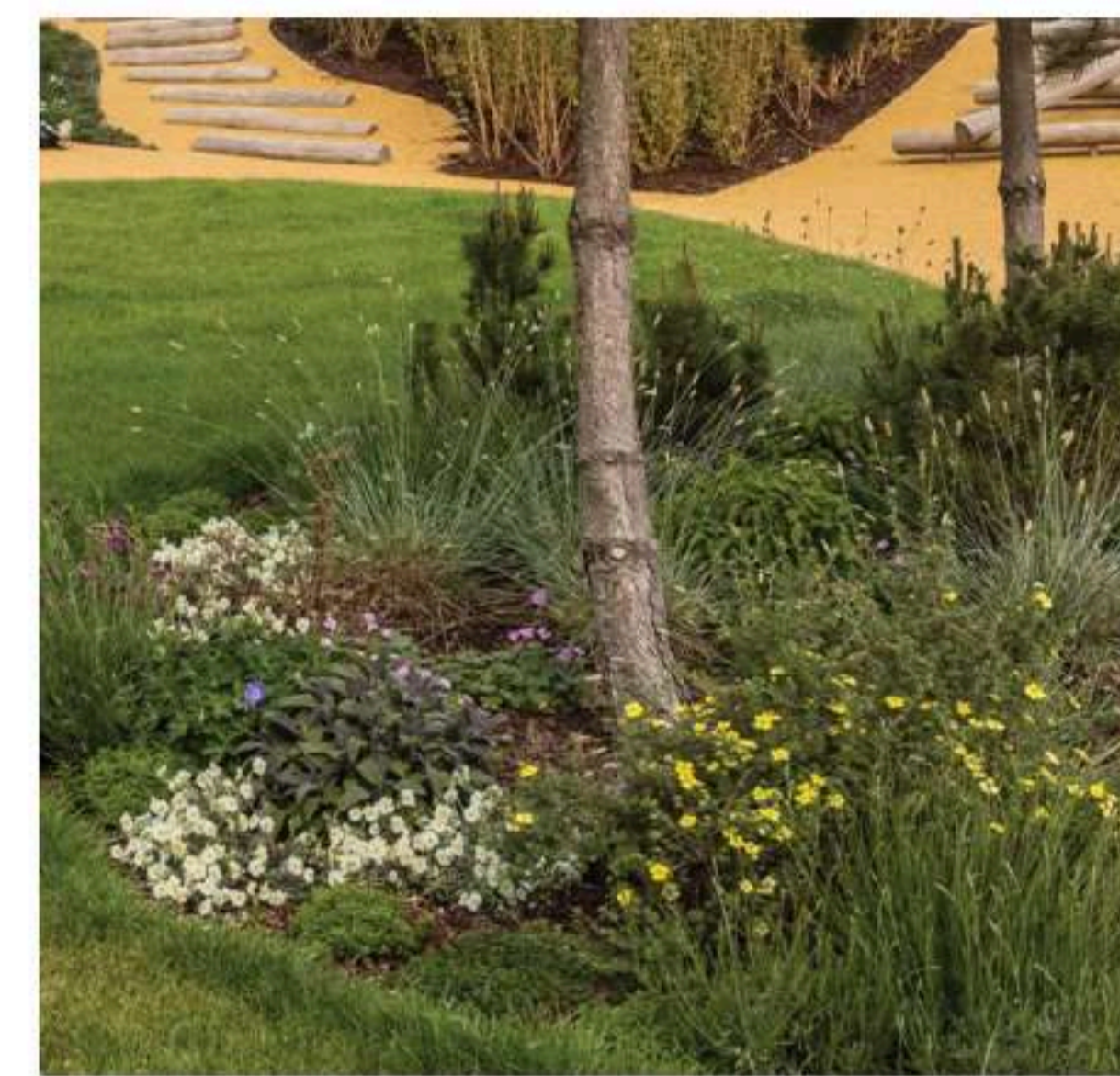


**H** Shady corner by MUGA



**I** Planted mounds, mature tree

## Proposed Palette



Planting beds



Mounded wetpour



Tiger mulch safety surfacing



New trees



Grassy mounds



Tarmac pathways



Bulbs & wild-flowers



Boulders



Log piles for biodiversity

# Surrey Square Park Play

public consultation: 12/11/25

## Proposed Site Plan

### ① Playground

- A place to play!
- Playground relocated to the south-west park, north of the shop
  - Play for all ages, all year round
  - Colourful metal features
  - All new, with 2 pieces repurposed

### ② Memorial Garden

- A place to contemplate
- Fence removed to improve access and sight lines; trees, boulders, planters and logs act as vehicle mitigation
  - Planters rearranged
  - Vegetation reduced to improve access and safety

### ③ Moundy landscape

- A place to explore
- A collection of smaller mounds
  - Wheeled play patch across the mounds creates an informal roller bowl
  - Picnic tables, biodiversity features, bulbs and wild-flowers

### ④ Outdoor gym

- A place to exercise
- Relocating the outdoor gym besides the MUGA
  - Introducing a wider range of equipment

## Principles

- Park for all:** Play and features for all people - accessible & inclusive
- Safety:** Removing visual and physical barriers to lengthen and widen sight lines and enhance passive surveillance
- Access:** Improving access on all corners and establishing an entrance hierarchy
- Reuse & recycle:** minimum 95%!
- Biodiversity:** trees, planting, wild-flowers, biodiversity features to enhance biodiversity

## Proposed Legend

- Primary entrance
- Secondary entrance
- Existing trees
- Proposed trees
- Mounds
- Picnic table
- Existing bench
- Proposed bench
- Existing pathways
- New pathways
- Grass
- Planting beds
- Wet-pour safety surfacing
- Tiger mulch safety surfacing
- Paved areas



## Proposed Play Equipment Schedule

### ① Playground (new features)



A Large multi play feature

B Swing - single and twin seats

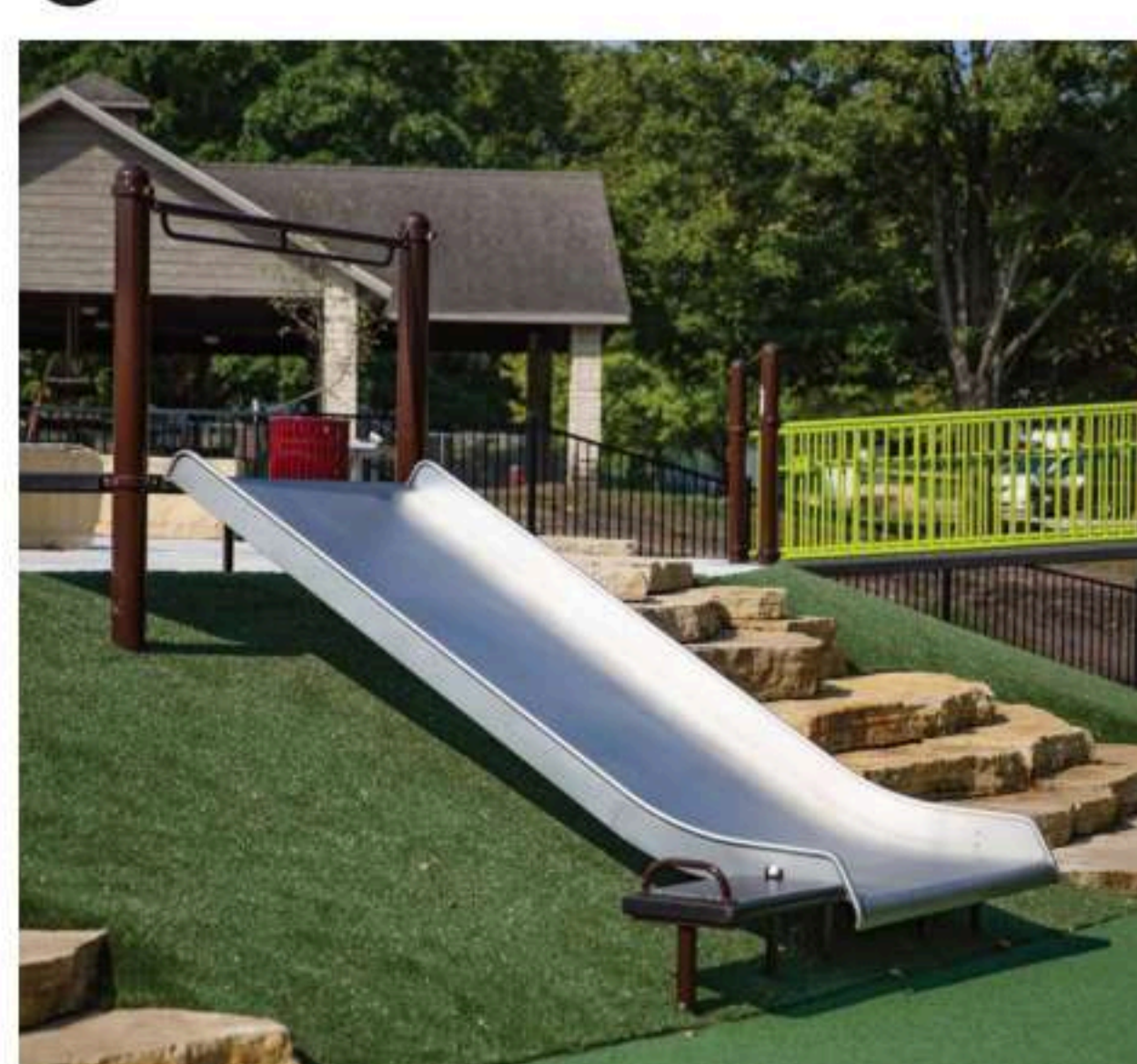
C Basket swing



F See-saw



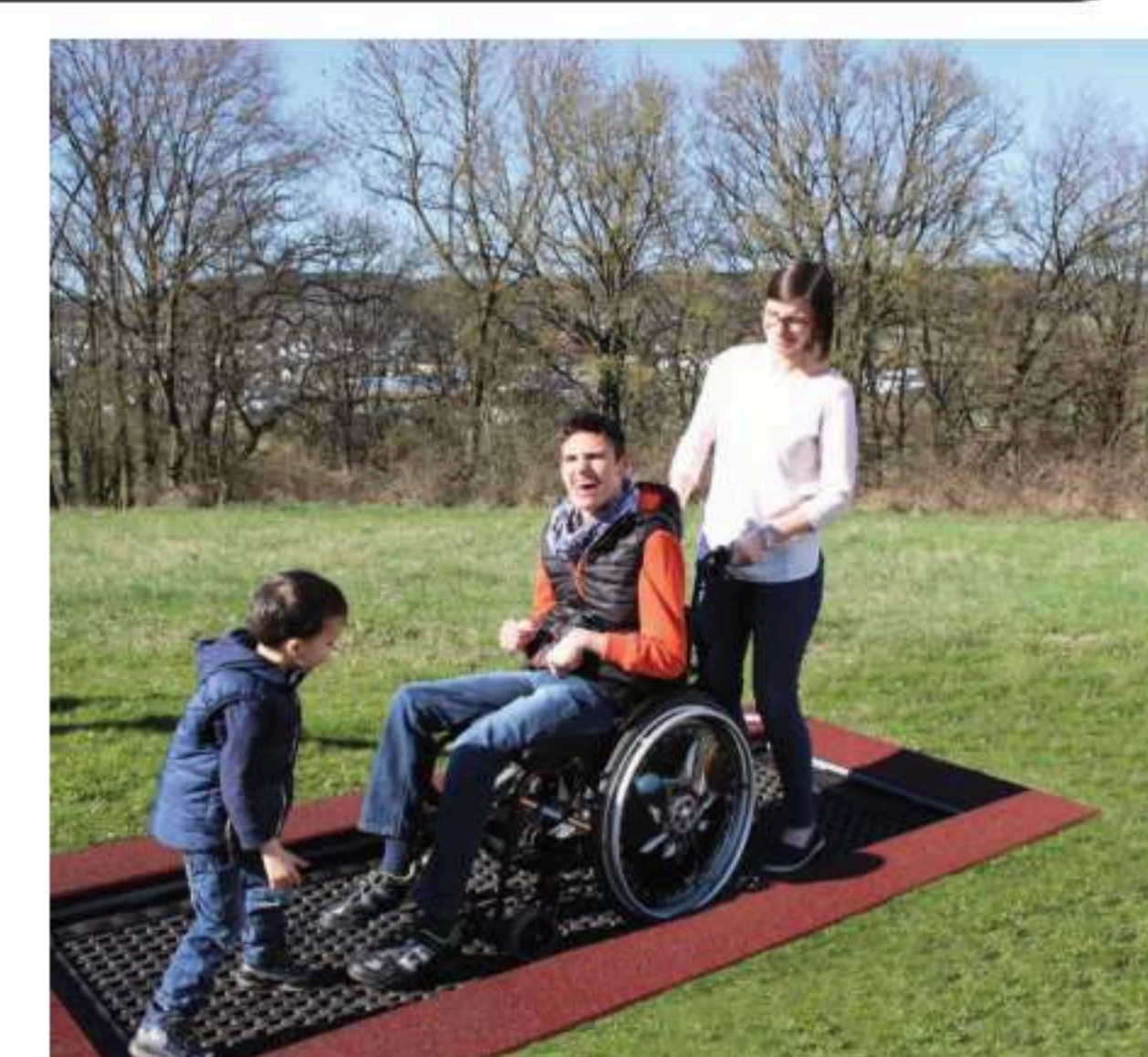
G Playground telephones



H Wide slide on mound scrambling and slope access



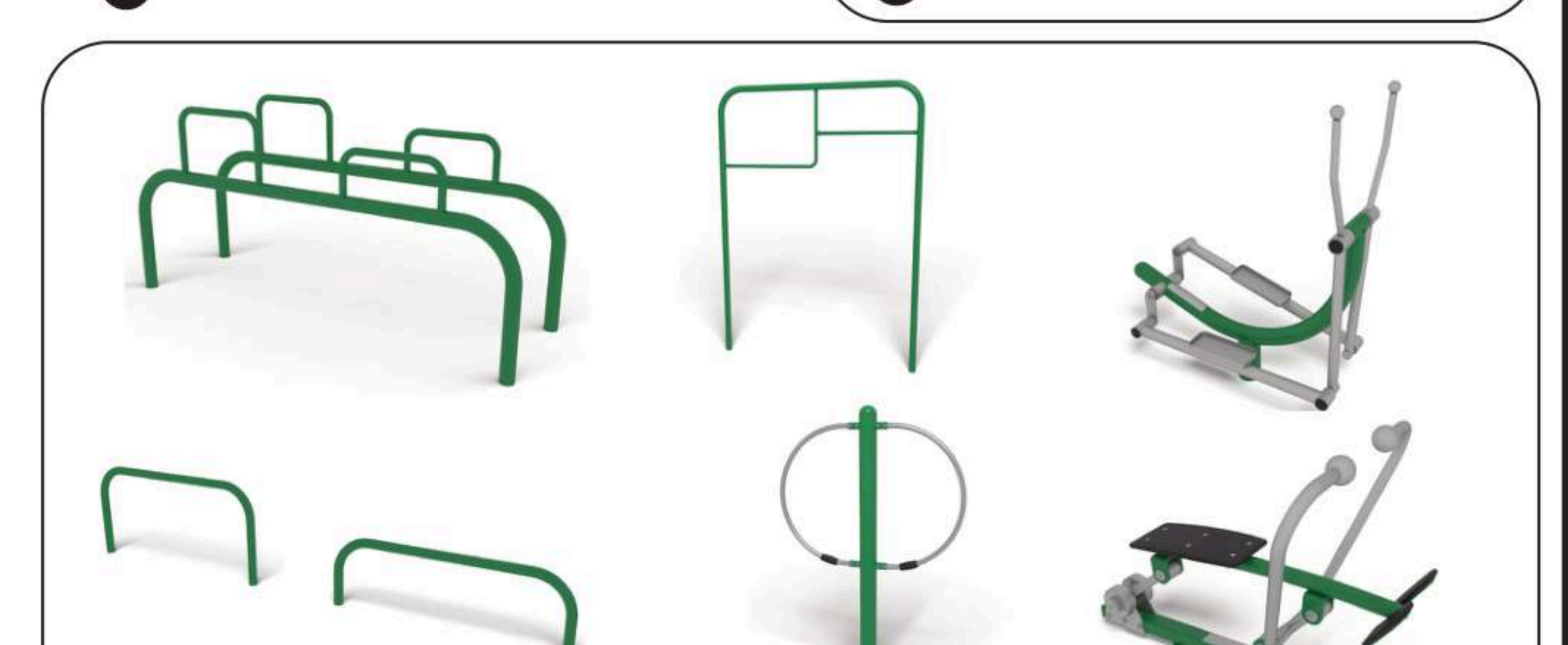
D Rotating bowl



E Trampoline



J Monkey bars



④ Outdoor Gym

### ① Playground (reused features)



K Mosaic car (refurbished)



L Net feature (refurbished)

### ③ Moundy Landscape



Y Roller bowl



Z Zip-line